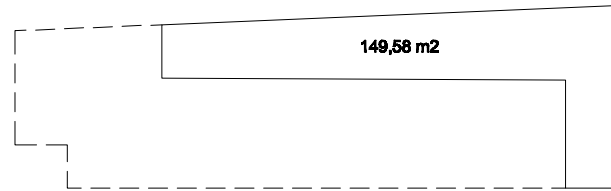
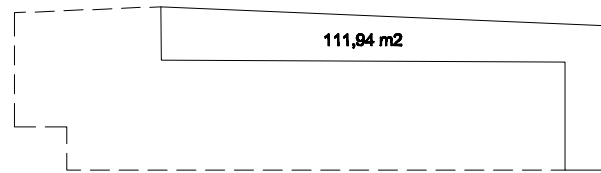


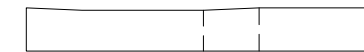
Vmesna fasada zahod



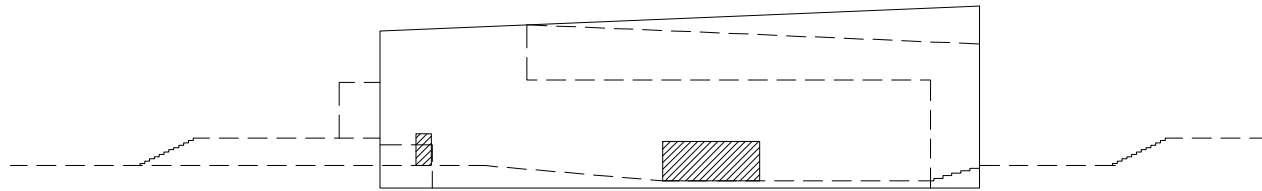
Vmesna fasada vzhod



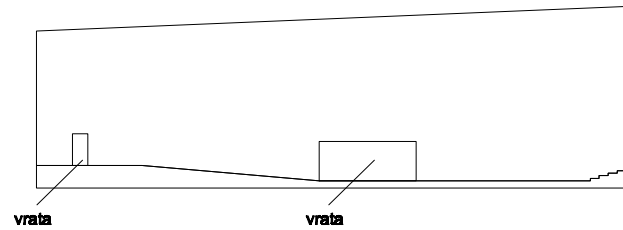
fasadne stene instal.terase
64,81 m2



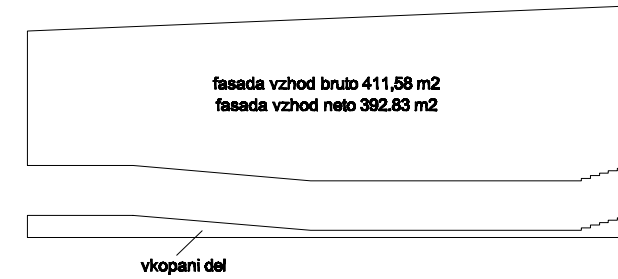
FASADA VZHOD



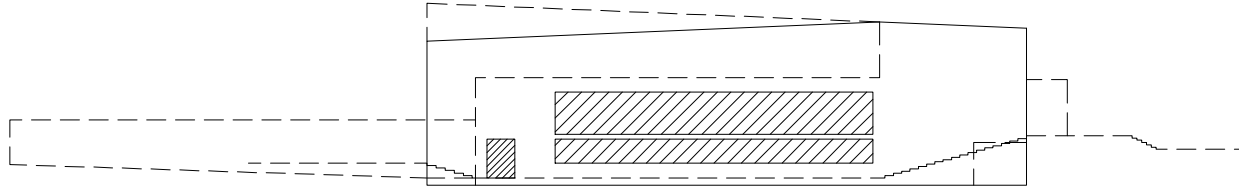
FASADA VZHOD



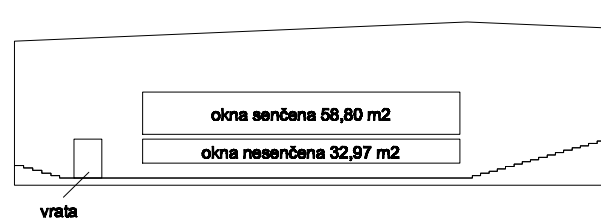
fasada vzhod bruto 411,58 m2
fasada vzhod neto 382,83 m2



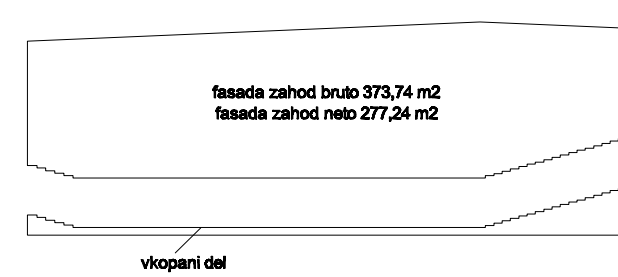
FASADA ZAHOD



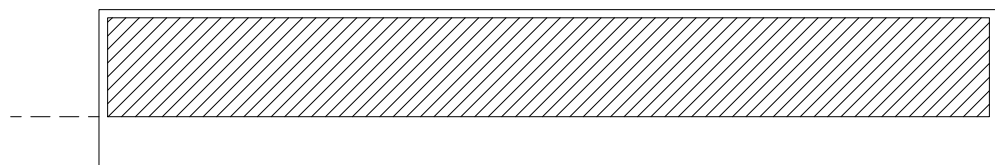
FASADA ZAHOD



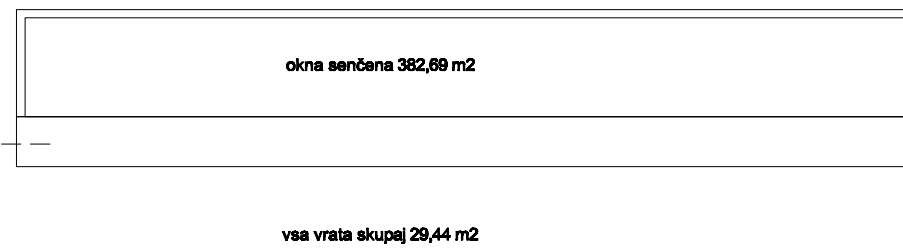
fasada zahod bruto 373,74 m2
fasada zahod neto 277,24 m2



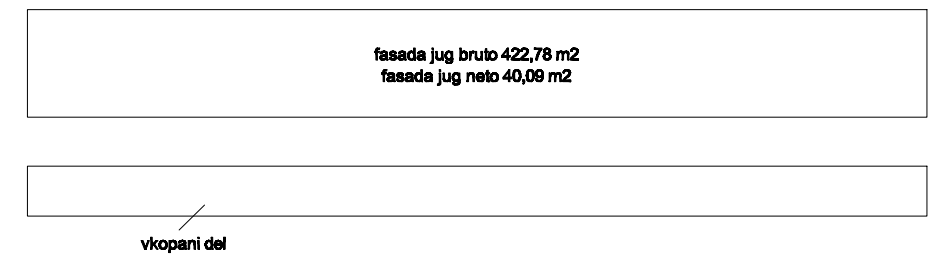
FASADA JUG



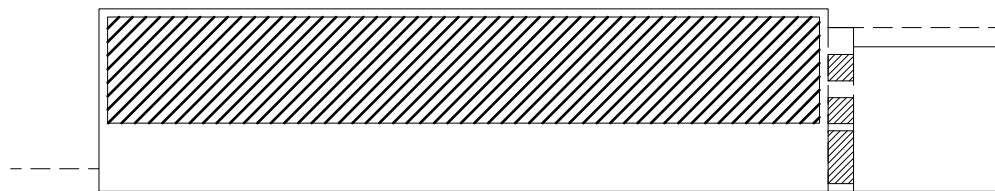
FASADA JUG



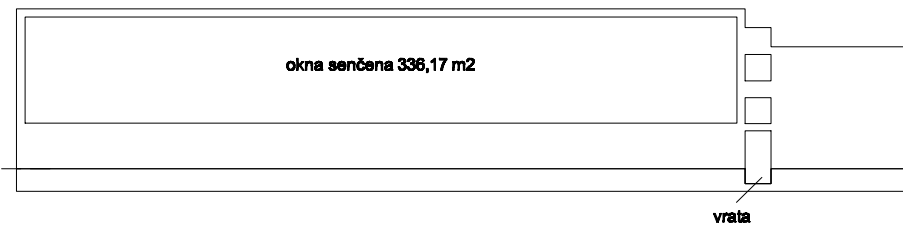
fasada jug bruto 422,78 m2
fasada jug neto 40,09 m2



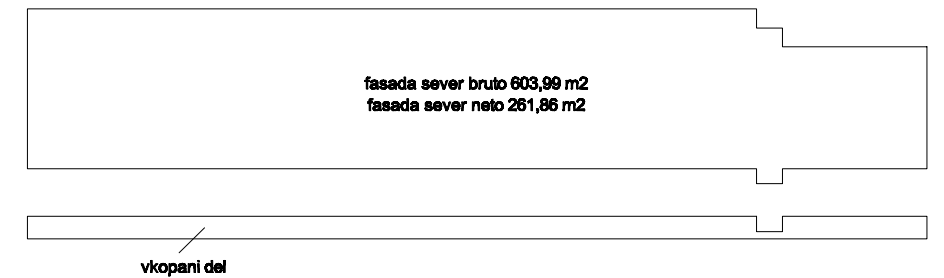
FASADA SEVER



FASADA SEVER



fasada sever bruto 603,99 m2
fasada sever neto 261,86 m2



vkopani del skupaj 350,09 m2



198,30

srednja višina vkopanega dela $350,09 / 198,30 = 1,77$ m

Izmere po stanju načrtov 2.07.2013!
Površine so računalniško odmerjene iz prikazanih skic.

Merilo 1:500

Telovadnica Stari trg pri Ložu
GRADBENA FIZIKA
Priloga 3/3