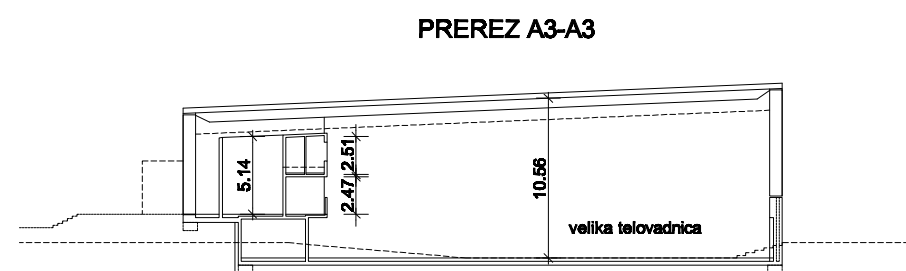
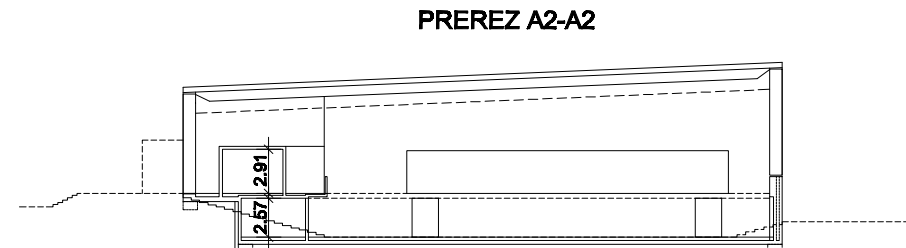
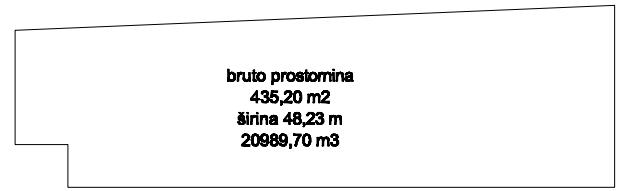
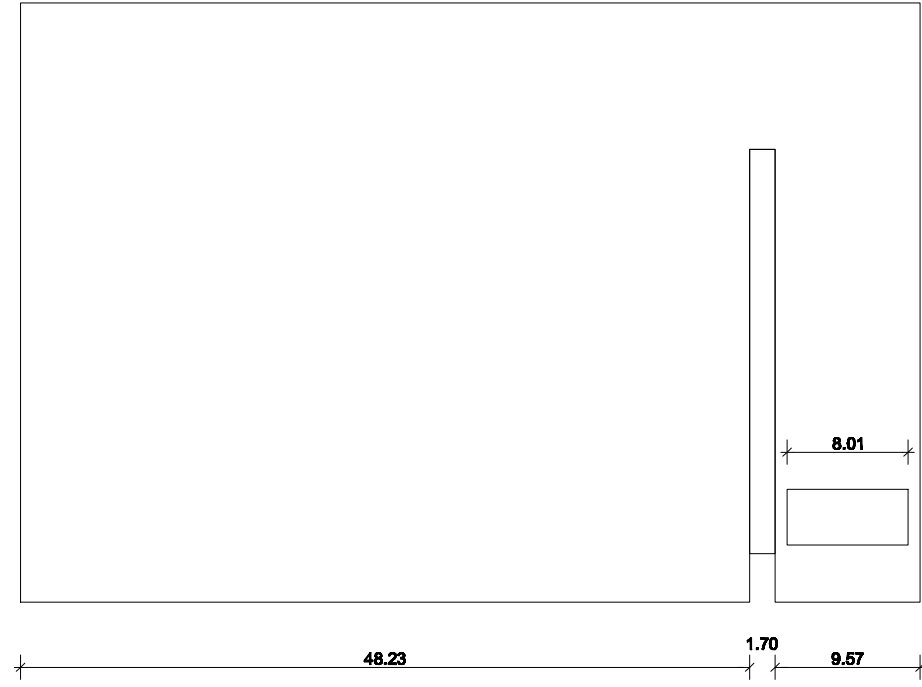
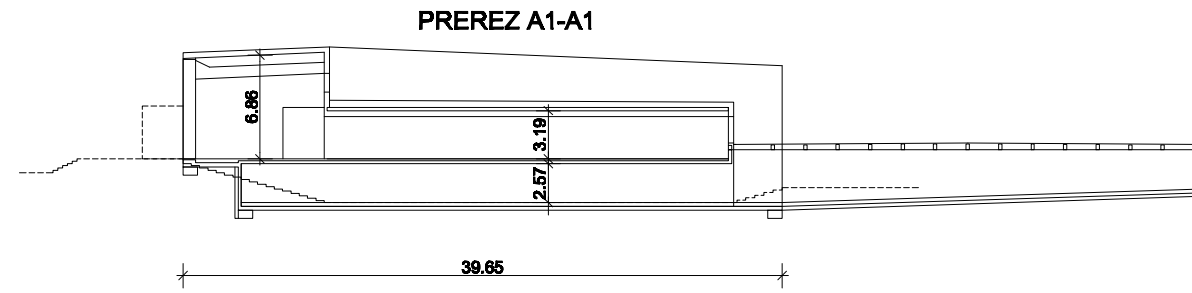
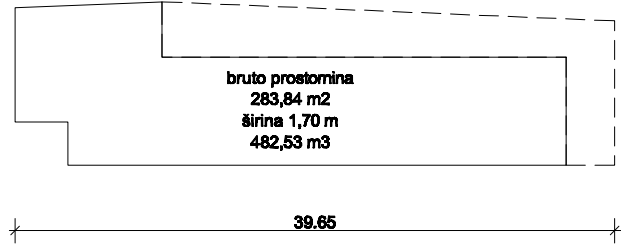
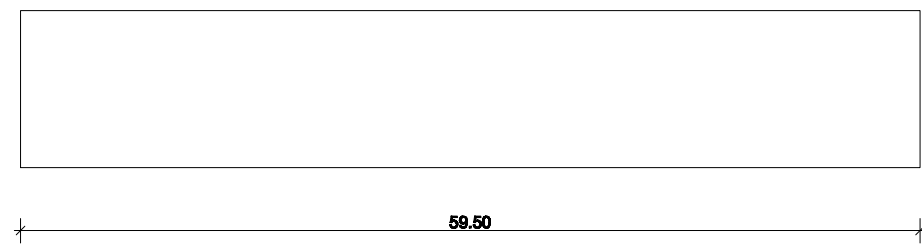
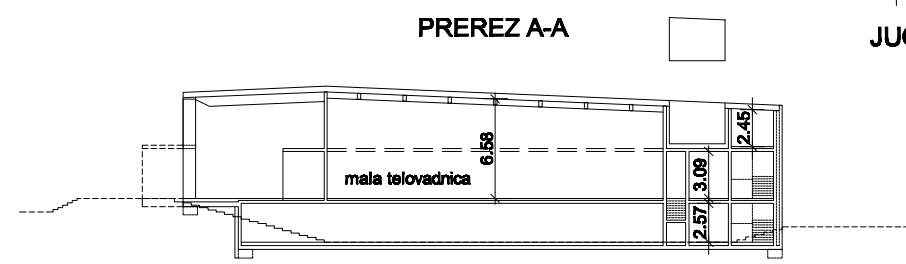
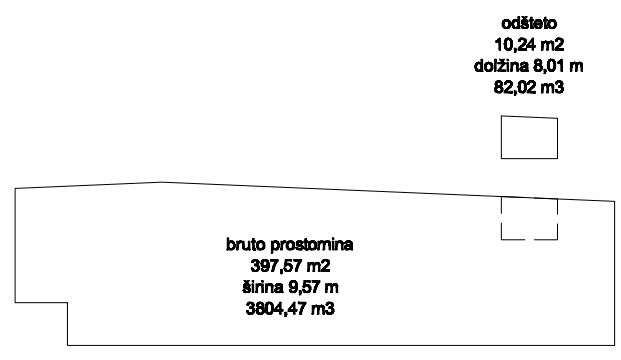
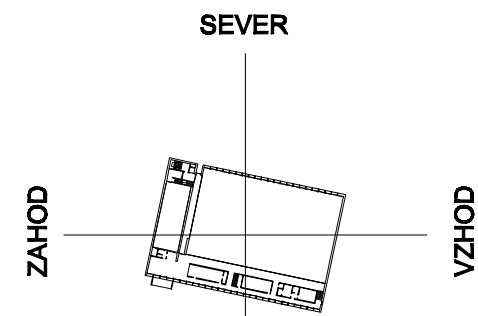


Bruto prostornina skupaj
 20989,70 + 482,53 + 3804,47 - 82,02 = 25194,68 m³

Neto prostornina skupaj
 14690,65 + 1526,48 + 1229,60 + 3366,57 + 225,92 + 176,62 + 56,62 = 21272,46 m³

Razmerje volumnov bruto / neto = 0,84

Neto površine skupaj
 1391,16 + 593,96 + 486,73 + 186,87 + 70,82 + 57,16 + 23,11 + 33,32 = 2843,13 m²



Izmere po stanju načrtov 2.07.2013!
 Površine so računalniško odmerjene iz prikazanih skic. Merilo 1:500